



SPIRIT·REINS

SPONSORSHIP REQUEST PACKET



ANNUAL FUNDRAISING EVENT



healing the past



building hope for
the future



strengthening families &
communities

Spirit Reins partners mental health professionals with horses to transform the lives of children and families who have experienced trauma. Our unique and effective therapy model helps children feel and experience safety, undo the shame associated with experiences beyond their control, and build healthy relationships. We also offer educational trainings and experiential workshops to support parents and child-serving professionals working with children impacted by trauma.



BeHERD is an engaging fundraising event designed to highlight the experience of our work, featuring interactive experiences with our horses and therapy teams, a demonstration of our healing work with horses, and learning more about the powerful healing that takes place at the ranch.

Guests will enjoy Texas beer and wine with Texas horses at a Texas ranch, while supporting Texas kids!

2020 Event Details

WHEN IS THE EVENT

October 24, 2020

WHERE IS THE EVENT

Spirit Reins

WHO WILL ATTEND

Business leaders and community supporters

BeHERD is Spirit Reins' largest annual fundraiser. The funds raised at this event will help us increase our capacity to provide life-changing services for more children and families and expand our program offerings to address secondary trauma experienced by parents and child-serving professionals.

SPONSORSHIP OPPORTUNITIES

Presenting Sponsor **\$15,000**

- "Presented By" recognition on video, website, emails, and all event signage
- Annual Event Sponsor recognition at all major Spirit Reins events in 2020
- Includes all the benefits of Changemaker

A \$15,000 sponsorship covers the cost of services for 2 families for an entire year (100 hours of family therapy services).

Changemaker **\$10,000**

- Meet & Greet with the Spirit Reins Team and horses before event at 11AM
- Day of service opportunity at Spirit Reins for employees
- Opportunity to place branded item at guests' seats
- Table for 10 at beHERD event
- Includes all the benefits of Visionary

A \$10,000 sponsorship provides group equine therapy to students for an entire school year.

Visionary **\$5,000**

- Reserved Tickets for 5 at beHERD Luncheon
- Special recognition during program
- Includes all the benefits of Partner

With 10 sponsorships of \$5,000, Spirit Reins could care for our herd of 34 horses for an entire year.

Partner **\$2,500**

- Social media recognition across all agency platforms
- Includes all the benefits of Friend

A \$2,500 sponsorship provides 40 professionals from school districts and community agencies with a trauma-informed and secondary trauma training from Spirit Reins.

Friend **\$1,000**

- Company name and logo prominently displayed and promoted as sponsor on:
 - > beHERD materials
 - > Event landing page with click through to company website
 - > Recognition in Spirit Reins' Newsletter
 - > Recognition in Spirit Reins' Community Impact Report

A \$1,000 sponsorship fills the gap in cost for 6 client sessions.

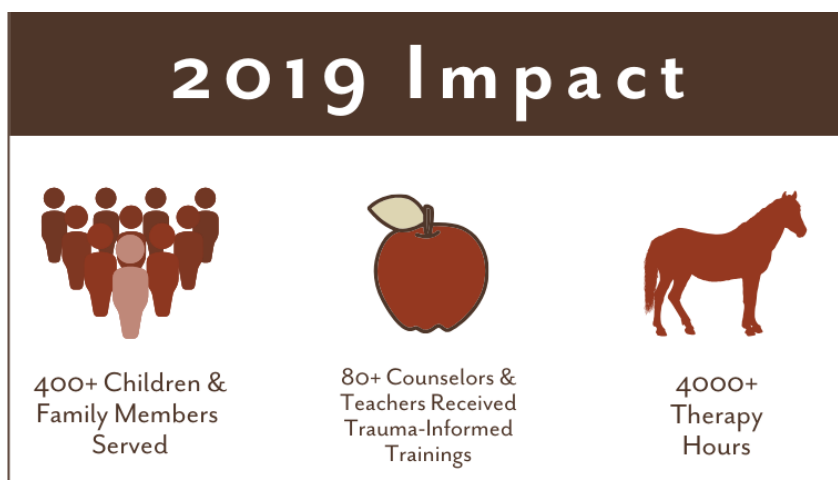
HELP US END THE GENERATIONAL CYCLE OF TRAUMA

Spirit Reins is addressing a public health issue: trauma. Nearly half of our nation's children are impacted by adverse childhood experiences (ACEs), and 64% of men and women acknowledge experiencing at least one ACE in their lifetime. The toxic stress experienced from childhood adversity increases a person's likelihood of depression, heart and lung disease, incarceration, and early death.

64%

of people are impacted by at least one traumatic experience in their life.

Together, we can build our community's resilience and end the generational cycle of trauma.



"THERE IS HEALING IN THE HERD"



Horses function best in herds, just like humans. At Spirit Reins, we believe that the success of our clients lies in our team-approach to healing. Likewise, the key to our organization's success lies in building a community of support.

Spirit Reins invites you to sponsor our beHERD luncheon to help us heal families and end the generational cycle of trauma.

We hope you will join our herd!

Please contact our Development Department for more information about sponsorship opportunities. We look forward to connecting with you!

Austin Painchaud
austin@spiritreins.org
(512) 778-9449

Monica Trout
monica@spiritreins.org
(512) 778-9449



Sponsorship Form

CONTACT NAME

COMPANY

ADDRESS

PHONE

CITY

EMAIL

SPONSORSHIP LEVELS

- ☐ Presenting Sponsor \$15,000
- ☐ Changemaker \$10,000
- ☐ Visionary \$5,000
- ☐ Partner \$2,500
- ☐ Friend \$1,000

We are unable to be a beHERD sponsor,
but enclosed is a donation of:

\$

CREDIT CARD NUMBER

EXPIRATION DATE

CSV CODE

NAME AS PRINTED ON CARD

SIGNATURE

How would you like to be listed as a sponsor?

Please send a high quality logo (.eps) and any brand guidelines to austin@spiritreins.org.

For questions about sponsorships, contact Development Director, Austin Painchaud, at austin@spiritreins.org. Forms can be mailed to Spirit Reins, ATTN: Austin Painchaud, P.O. Box 368, Liberty Hill, TX 78642 or visit www.spiritreins.org/sponsorbeherd to complete the sponsorship form online.